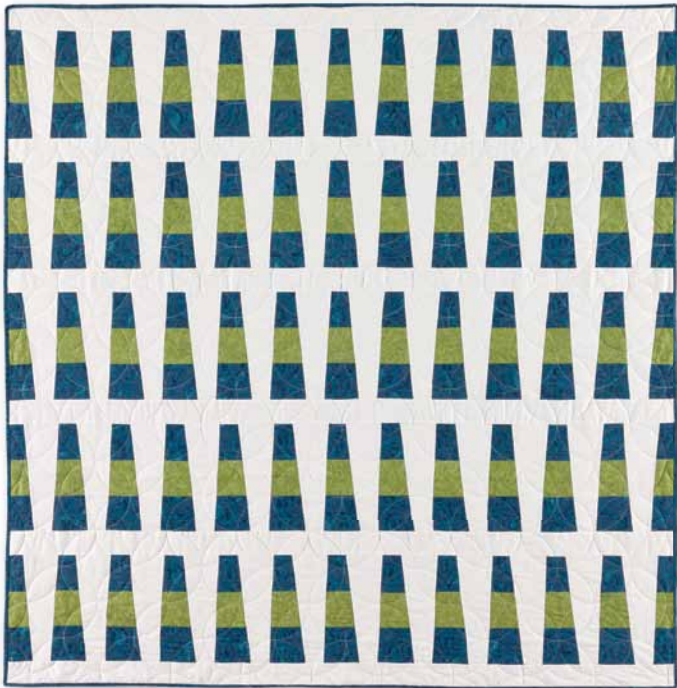


GO! Cerulean Wedge Quilt

finished size 57" x 60"



Fabric provided by Robert Kaufman Fabrics.

GO!® DIES USED

- GO! Wedge-9" Finished (55439)
- GO! Strip Cutter-2½" (2" Finished) (55017 or 55014)
- GO! Strip Cutter-3½" (3" Finished) (55032)

FABRIC REQUIREMENTS

- Fabric 1—3¾ yards
- Fabric 2—1½ yards
- Fabric 3—1 yard
- Binding—¾ yard
- Batting—65" x 70"
- Backing—4 yards

CUTTING DIRECTIONS

Fabric 1:

- Cut 6—2½" x 66" length of fabric (LOF) strips
- Cut 6—10" x width of fabric (WOF) strips

Fabric 2:

- Cut 14—3½" x WOF strips

Fabric 3:

- Cut 7—3½" x WOF strips

Binding Fabric:

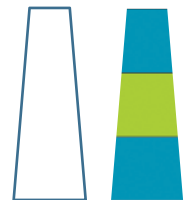
- Cut 7—2½" x WOF strips

SEWING DIRECTIONS

1. Sew together two, Fabric #2 strips and one, Fabric #3 strip as shown in Diagram 1. Press towards Fabric #2.
2. Repeat previous step to make a total of seven strip sets.
3. Cut out 65 pieced wedges (Unit #2) using the GO! Wedge die, from the seven strip sets created above.
4. From Fabric #1, 10" x WOF strips, cut out 60 wedges, Unit #1.
5. Lay out 12, Unit #1 wedges and 13, Unit #2 wedges as shown. Sew together alternating between Units, flipping direction of wedges so they nest together as in Diagram 2.



Diagram 1



Unit #1 Unit #2

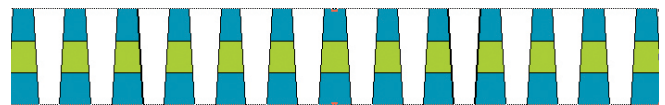
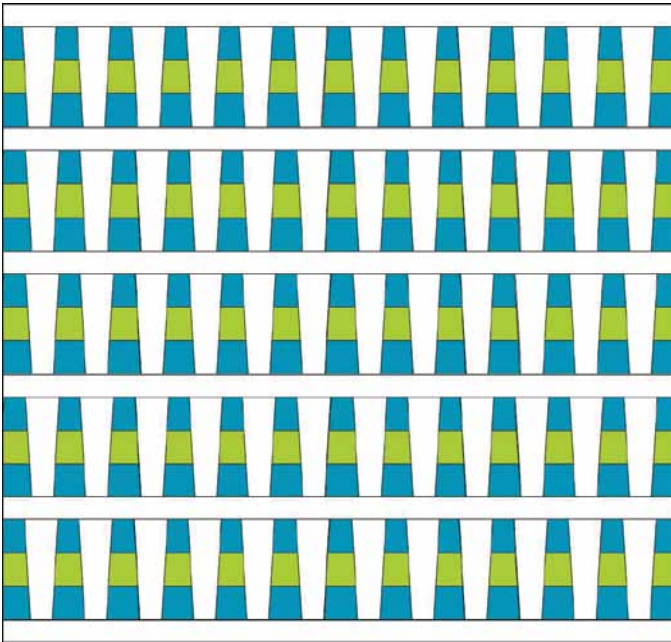


Diagram 2

6. Press towards Unit #1.
7. Repeat previous two steps to make a total of five pieced strips.
8. Measure the length of the pieced strips. Cut six, Fabric #1 LOF strips to this length.



9. Lay out the six, Fabric #1 LOF strips and the five pieced strips as shown.
10. Sew together. Press seams towards Fabric #1.
11. Trim quilt top edges even.

QUILTING AND FINISHING

1. Layer quilt top with batting and backing.
2. Pin or baste layers together.
3. Model was custom machine quilted.
4. Add binding, mitering the corners.