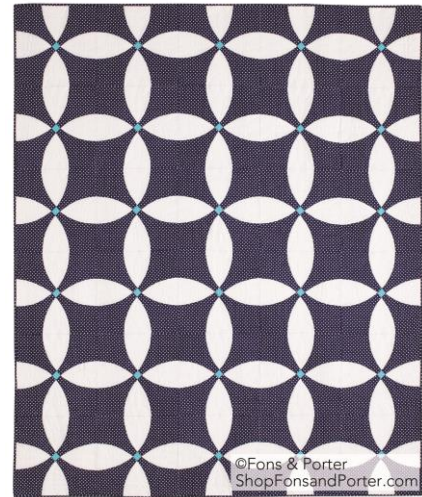


GO! Midnight Blue Quilt

Finished Size 60" x 72"



GO!® Dies Used, Number of Shapes to Cut & Fabric Requirements

Fabric Color	Shape	GO! Dies Used	Number of Shapes to Cut	Fabric Required
Navy		GO! Flowering Snowball (55252) (Piece A)	Cut 12—13½" x width of fabric (WOF) strips. Fanfold the strips at 7¼" widths and cut 120 of Piece A.	5 yards
White		GO! Flowering Snowball (55252) (Piece B)	Cut 15—6½" x WOF strips. Fanfold the strips at 9¼" widths and cut 120 of Piece B.	3½ yards
Aqua		GO! Flowering Snowball (55252) (Piece C)	Cut 2—1 5/8" x WOF strip. Fanfold the strip at 1 5/8" width and cut 30 of Piece C.	1/4 yard

Additional Fabrics/Notions Needed

- Batting—70" x 80"
- Backing—4½ yards
- Binding—1 yard (Cut 8—2½" width of fabric strips)

Additional GO! Dies Used

- GO! Strip Cutter-2½" (2" Finished) (55017 or 55014)

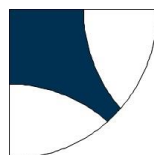
Sewing Directions

1. Line up notches and pin one navy Piece A to one white Piece B. Sew and press towards white Piece B as shown in Step 1.



Step 1

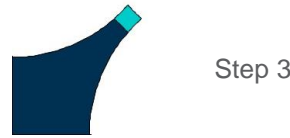
2. Line up notches and pin one white Piece B to the other side of one navy Piece A. Sew and press towards white Piece B as shown in Step 2.



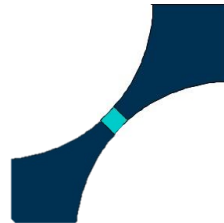
Step 2 – Unit 1

3. Make two Unit #1's.

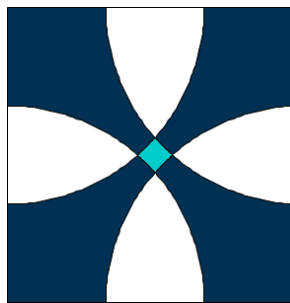
4. Pin and sew short side of one navy Piece A to one aqua Piece C as shown in Step 3.
5. Pin and sew one navy Piece A to the other side of the aqua Piece C to make Unit #2 as shown in Step 4.
6. Line up notches and pin then sew one Unit #1 to each side of Unit #2 as shown in Step 5.
7. Make a total of 30 blocks. Blocks should measure 12½" x 12½" square.
8. Lay out the 30 blocks so that you have five blocks across and six blocks down.
9. Pin and sew blocks into rows pressing seams in opposite directions.
10. Pin and sew rows together pressing seams in the same direction.



Step 3



Step 4 – Unit 2



Step 5

Quilting & Finishing

1. Layer quilt top with batting and backing.
2. Pin or baste layers together.
3. Model was custom machine quilted.
4. Add binding, mitering the corners.

