





GO! Strippy Catch-All Basket

Finished Size 8½" x 8½" x 7½"
Finished Size 5½" x 5½" x 4½"

Fabrics are from the Basics Fabric Collection by Riley Blake Designs

GO!® Dies Used, Number of Shapes to Cut & Fabric Requirements



Fabric Color	Shape	GO! Dies Used	Number of Shapes to Cut	Fabric Required
Red		GO! Strip Cutter-1" (½" Finished) (55052 or 55164)	Cut 2—1" x width of fabric (WOF) strips. Sub cut 3—15½" strips.	1/8 yard
Gray		GO! Strip Cutter-1½" (1" Finished) (55024 or 55164)	Cut 2—1½" x WOF strips. Sub cut 3—15½" strips.	1/8 yard
Aqua		GO! Strip Cutter-2" (1½" Finished) (55025 or 55164)	Cut 2—2" x WOF strips. Sub cut 3—15½" strips.	1/8 yard
Aqua/Red		GO! Strip Cutter-2½" (2" Finished) (55017 or 55014)	Cut 2—2½" x WOF strips. Sub cut 3—15½" strips.	1/6 yard

Additional Fabrics Needed:

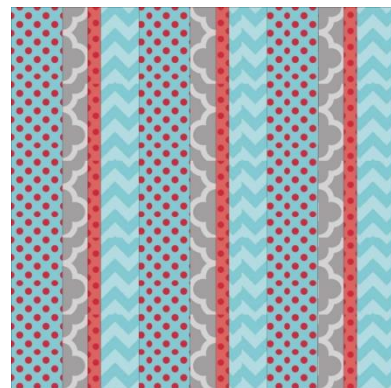


Lining Fabric —15" x 15"

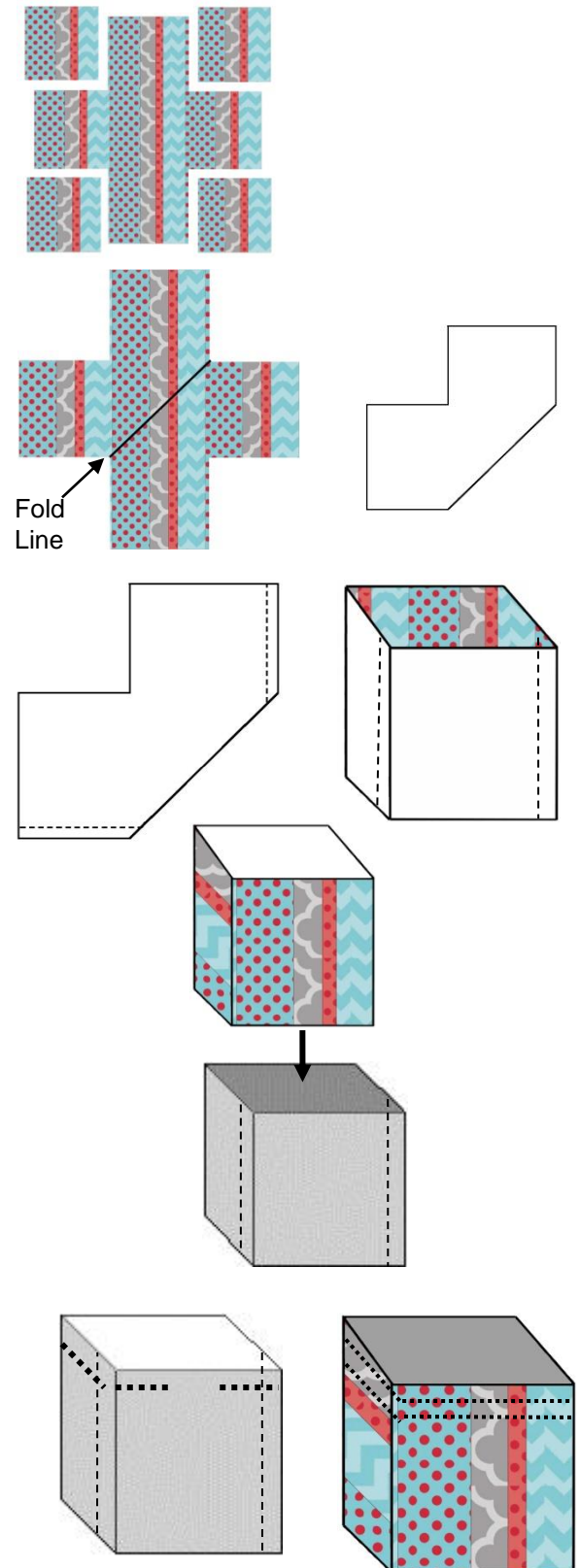
- Fusible Fleece—2 pieces 15" x 15" each

Sewing Directions

1. Lay out all 12 strips in random, eye-pleasing order.
2. Pin and sew together. Press seams open.
3. Trim to 15" x 15".



4. Fuse a 15" x 15" square piece of fusible fleece to the wrong side of the 15" x 15" strip block. Quilt, if desired.
5. Cut and remove a 4½" square from each corner, leaving a plus-shaped strip set.
6. Fold on the diagonal, right sides together, using the diagram as a reference.
7. Pin and sew the bottom and right sides together using a ¼" seam allowance (see diagram).
8. Match, pin, and sew the opposite sides, forming an open cube.
9. Repeat steps 4 - 9 with the gray lining fabric.
10. Place the open lining cube, wrong sides facing out, on the table. Insert the strip cube, right sides out, inside the lining cube. With right sides together, line up the corner seams and pin around the top edges.
11. Stitch around the top edges with a ¼" seam, leaving an opening for turning.
12. Turn right sides out, pushing the lining inside the open cube. Press the top edge, making sure the top seam is even and the corner seams match.
13. Edge stitch around the top seam using a ⅛" seam and a ¼" seam.



Additional Size Options:

Finished Size	Pieced block, lining, and fusible fleece square size:	Corner square size to cut and remove (step 5):
4½" x 4½" x 3½"	12"	3½"
6½" x 6½" x 5½"	18"	5½"
7½" x 7½" x 6½"	21"	6½"
8½" x 8½" x 7½"	24"	7½"
9½" x 9½" x 8½"	27"	8½"