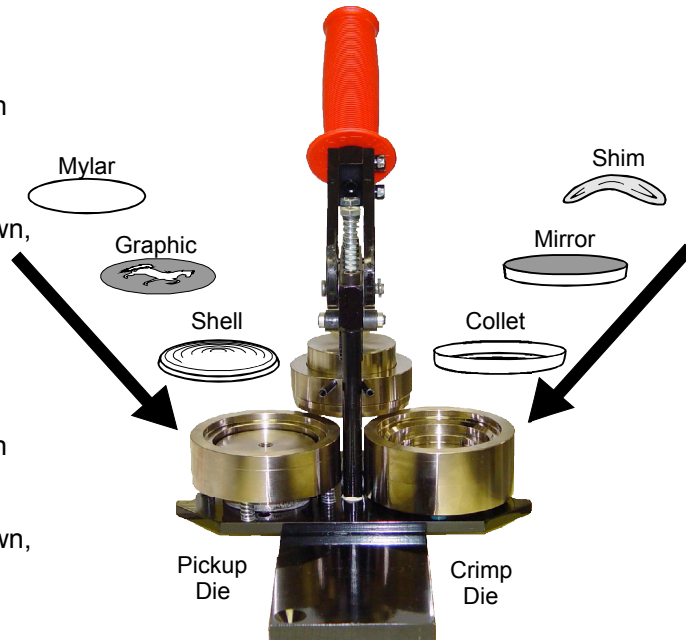
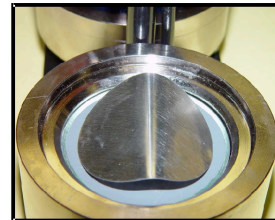


HOW TO MAKE A COMPACT MIRROR

1. Place the shell, graphic, then mylar into the pickup die.
2. Rotate the die table one-half turn clockwise until the die table is against the outer column.
3. Press the handle all the way down, then raise all the way up.
4. Place the collet (sharp side up), mirror (reflective side down), then a bent shim into the crimp die.
5. Rotate the die table one-half turn counter clockwise.
6. Press the handle all the way down, then all the way up.
7. Rotate the die table clockwise



Note: You must use a shim that you have bent. (As pictured here) The bent shim will prevent movement of the mirror in the finished mirror button.



80 GSM PAPER IS RECOMMENDED- THIS IS REGULAR PRINTER PAPER